

HOBIKKEN INDOOR 1050 3W

This wooden playhouse is inspired by Nordic architecture, with predominately warm colours and red and dark tones.

FEATURES:

- The indoor model of the Hobikken product line, very easy to assemble.
- With the largest interior space of all indoor playhouses on the market..

TECHNICAL SPECIFICATIONS:

Materials:

- The indoor childrens playhouses are made up of four outside walls and a horizontal roof. The main material is MDF wooden boards (Medium Density Fiberboard) finished with melamine wooden finishing.
- The hardware is made of highly resistant steel. The windows are all methacrylate and are fixed with a rubber sealing.

Openings:

There are a total of 3 fixed window, plus the entrance, and another is open window for climbing in and out.

No roof included for better control from adults.

Assembly:

Fitting system to existing walls are not supplied.

Assembly is very simple. In 15' will be ready to play.

Dimensions (W x D x H):

2,07x1,04x1,20m (3'-5"x3'-5"x3'-11")

Total weight:

- 80 kg

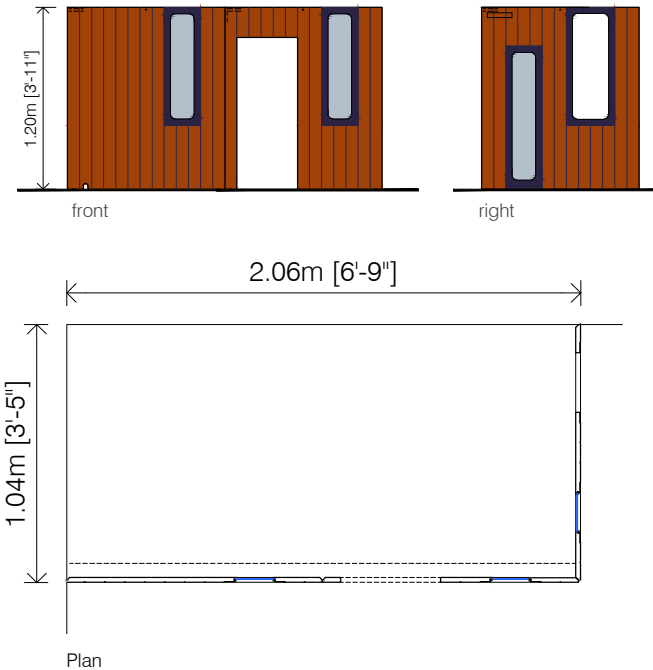
Recommended age:

- From 2 to 7 years old.

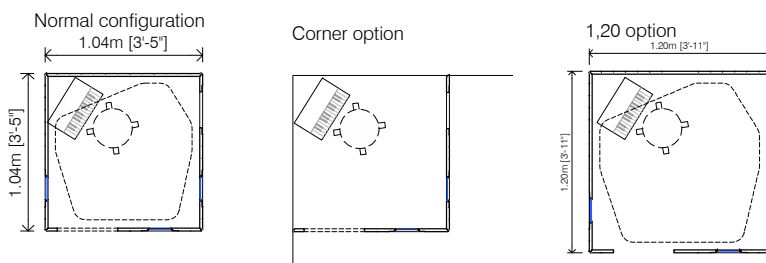
OPTIONAL EXTRAS:

- Roof. We can also provide a full roof on chipboard.

- Painted edges. For an intensive use, we can paint the edges. Indicated for public spaces such as nurseries, hospitals, hotels, etc.



RELATED PRODUCTS:



High Security Standards
Best quality
Nordic Pedagogy